

A cut above





About
us

Improved productivity, higher profits

If you're looking for machinery to help automate your window fabrication business, you'll already know that increasing productivity can give your team more time for the value-added activities that can make all the difference to the revenue and profit your business can generate.

Avantek Machinery offers a wide range of machinery from the most reputable suppliers, featuring the latest technology - with the added advantage of much shorter lead times than the competition.

If you order from Avantek, you'll find our machines are often available from stock, so you can take delivery when you need it.

And with expertise and support from a team with vast industry experience, you can be sure of getting exactly the right machinery for your business, whether you manufacture PVCu or aluminium window and door systems.

An official dealer for both Wegoma and Urban machinery, Avantek also pioneered and developed

the highly successful Supercut machining and cutting centre, which is available in a choice of sizes.

With a focus on customer service and spare parts stocked in the UK, the Avantek team can help take the pain out of ordering new machinery and changing window systems.

Part of the Flamstead Group, a division of Quanex Building Products and one of the London Stock Exchange's '1000 Companies to Inspire Britain', Avantek Machinery was formerly known as Wegoma Machinery Sales, changing its name in 2016 to reflect the growth and expansion of the company.

Why choose Avantek?

Highest standards

We take great pride in our company - identifying ourselves with a quality driven approach to manufacturing and customer services.

We operate with and expect to achieve only the highest of standards; tolerating no less.

Our obsession with quality is reflected by our professional, handpicked and well trained technical workforce whose dedication and self-motivation provides for efficient and effective manufacturing.

Parts stocked in the UK

A huge range of parts is stocked in the UK, for your peace of mind and speedy maintenance. Avantek also offers a full installation and training service, combined with ongoing support and advice to ensure your operation can run with minimal disruption and maximum efficiency.

Our stock includes **Hanning** and **Perske** motors, **Jetter** drives, **Festo** pneumatics and **PMI** bearings as well as all your consumable needs, such as router bits, sawblades and drills - all ready at our UK premises.

Avantek offers:

- Low costs without compromising quality, consistency or technical proficiency
- Four decades of unparalleled experience in the industry
- An empathetic and responsive nature for clients' needs whilst designing products
- A dedicated, handpicked workforce with a high commitment and adaptability for ever- changing demands
- Excellent service, professional standards and customer relations

Unparalleled service

Customer focused, Avantek Machinery delivers with an in-house, fully trained service team, software and mechanical telephone support, plus direct trouble-shooting access via remote connection over the internet.

The Avantek team provides unparalleled standards of service to the UK window fabricator for both installation, after-care and technical support.

No wonder Avantek Machinery won NFA Machinery Company of the Year 2015.

✓ Four decades of unparalleled experience

✓ Excellent customer service

✓ Official Wegoma and Urban stockist

✓ UK-stocked parts - less downtime

✓ Long standing reputation for quality

✓ Machinery available from stock

✓ Full planning and consultation service

✓ Expert technical advice and support

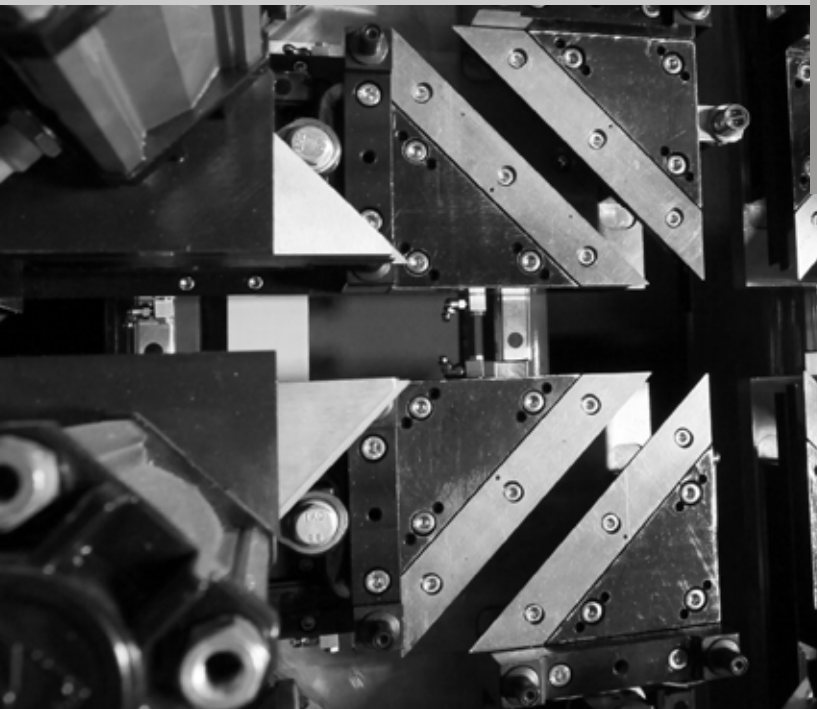
✓ Competitive prices without compromising quality

✓ Full installation support

✓ On-site and remote software support

✓ Understands the changing needs of the industry.

Official Wegoma dealer

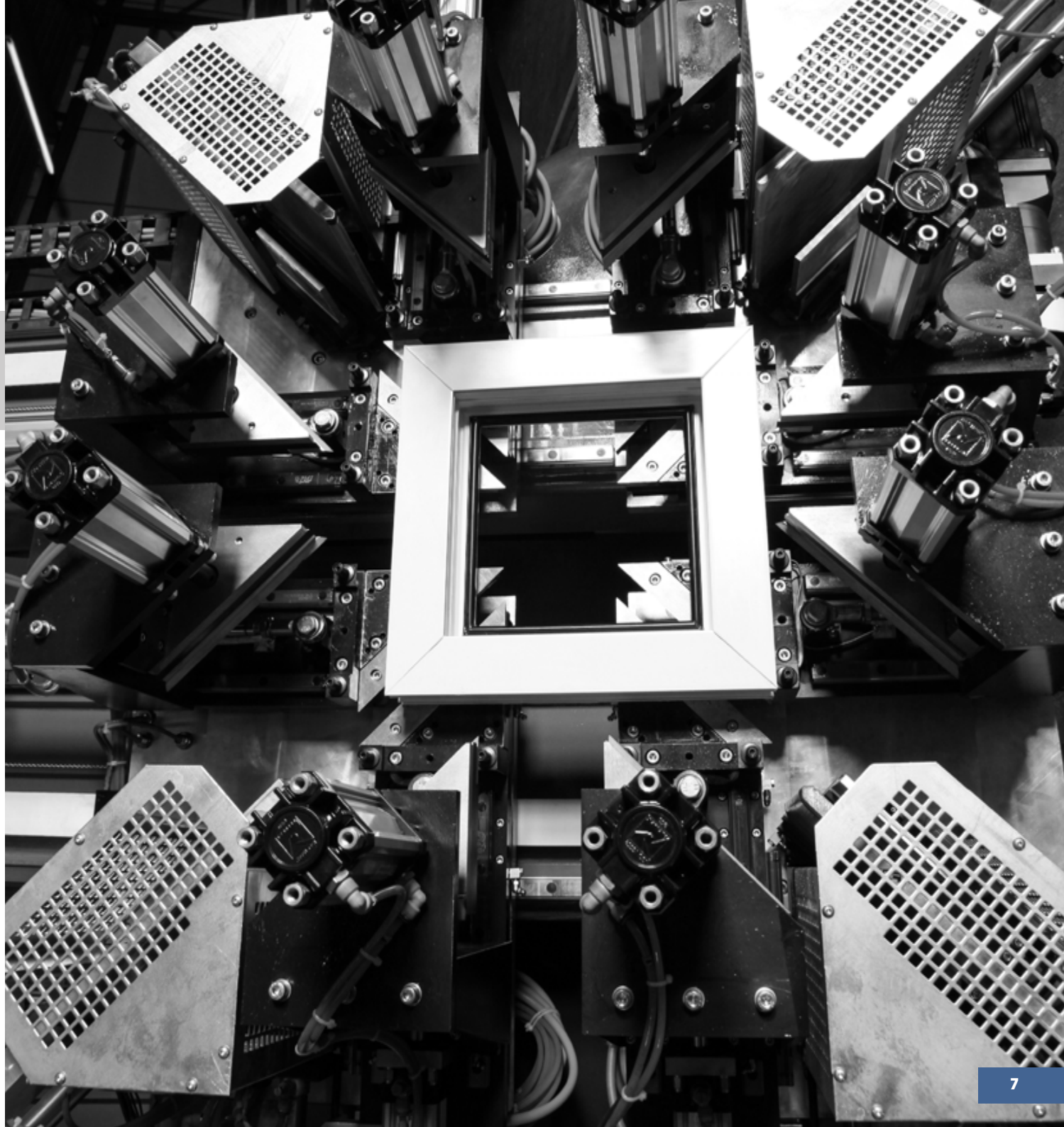


Founded in Germany in 1970, Wegoma has earned its status within the industry as a leading name for quality and reliable production of PVCu and aluminium window manufacturing machines.

With factories and offices all over the world, Wegoma spans Europe, Asia and the Americas; but is still headquartered where it was founded in Pforzheim, Germany.

From welders to cutters and cleaners, the Wegoma range is synonymous with quality, developed by a company that has built an enviable worldwide reputation for excellence.

Avantek Machinery is proud to be the UK supplier for complete sets of machinery for PVCu and aluminium windows, doors and curtain walls; and for processing industrial aluminium profiles.





Official Urban dealer

U-R-B-A-N

For more than six decades, Urban has been one of the world's leading producers of machinery for manufacturing energy efficient PVCu windows and doors.

More than 5,000 manufacturers globally benefit from its exceptional, German-made machinery.

From small, low-cost machine units right through to highly technical production lines, Urban has the machinery to suit specific manufacturing needs, including welding machines, corner cleaning machines, handling equipment, machines for the assembly of metal fittings, bar processing machines and cutting saws.

New for 2016, Avantek is delighted to announce its partnership with Urban machinery, supplying both machinery and spares from stock across a wide range of products.



Cutting edge technology

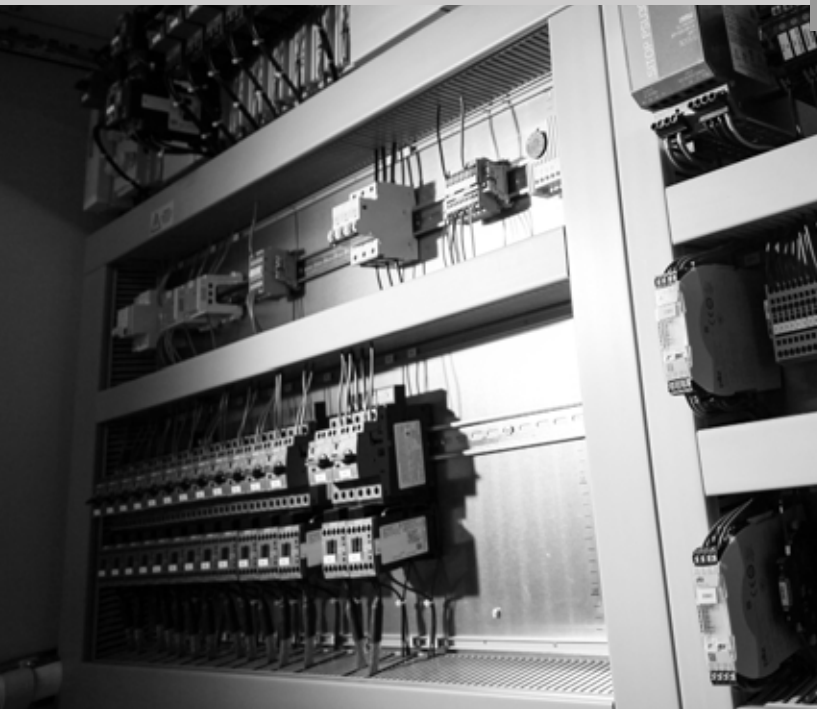


The Supercut is a high end machining centre, custom built for the UK and Irish PVCu window industry.

Designed with the UK fabricator in mind, the Supercut range of machining and cutting centres heralds a new era in the supply of machines for the PVCu manufacturer.

The Supercut range utilises **Jetmove 200** axis drives and control systems, bespoke **Axis 2013** database operating system was developed exclusively for the Supercut range. The electronic system was designed and is manufactured by **Futronics**, along with **Festo** pneumatics and SPS system.

Hanning motors drive the 3x 550 diameter blades and in the fully enclosed machining portal, 12 **Peske** 22,000 RPM high frequency motors run the machining tools. .







Built for your
business



We know that not everyone has the space of capacity for huge machinery – that’s why the Supercut is available in two sizes and specifications.

The Supercut 5 measures 13.8m by 3.6m and is ideal for the small to medium fabricator, with an output of up to 400-450 windows per week at 100%, depending on the mix.

Its modular design allows the addition of a second gripper arm, almost doubling your output without the need to purchase a whole new machine.

The high levels of adaptability and the wide range of prepping the machine can achieve also means improved productivity and efficiency in comparison to other machining centres. The software interfaces seamlessly with your own window manufacturing software, giving superb profile optimisation. And automatic measuring and re-optimisation of all rest

pieces will help you achieve ongoing savings on wastage.

The Supercut 6 is perfect for the larger window manufacturer, with the same efficiency benefits as the Supercut 5 but with the addition of a separate machining portal and a three-piece sawing centre.

Both are fully enclosed and connected to the machine via a second, numerically controlled 6m gripper arm. Machining and cutting can take place simultaneously, allowing for greater output - Supercut 6 can manufacture up to 800-900 windows per week at full capacity, depending on the mix.

With left hand or right hand feeds available, the Supercut 6 measures 20.3m by 3.6m.



Supplying a full and comprehensive product range, from hand tools up to and including fully CNC controlled production lines, our comprehensive industry experience has been gained over decades to address the various challenges of window manufacture.

Avantek is also authorised to supply, service and maintain the full range of Urban machinery, providing the same excellent levels of customer service, as well as the full Wegoma range of welders, saws, routers, corner cleaners and millers.

Machinery for
every job



Welding

- Single Head UPVC Welders
- In-line Multihead Welders (2, 3, 4, 5 Heads)
- Vertical 4, 6, 8 Head Welding Machines
- Horizontal 4, 6, 8 Head Welding Machines

Cutting

- Double mitre saws
- Radial Arm Saws
- Glazing bead saws
- V-notching saws
- Steel saws
- Upstroke saws

Routing

- Endmillers
- Door routers
- Waterslot routers
- Reinforcement screwdrivers
- Copy & drilling

Cleaning

- Single or Multiple Cutter Block Corner Cleaning and Grooving Machines
- Pneumatic Four Knife Transom Grooving Machines
- CNC fully programmable and automatic cleaning machines 2 and 4 axis
- CNC Integrated Fully Automatic Cleaning Lines
- Automatic Turning Stations

Aluminium

- Automatic End Milling and Notching Saws
- Hydro-pneumatic Corner Crimping Machines
- 3 Axis machining centre
- 3.5 Axis machining centre
- 4 Axis machining centre

WEGOMA

U-R-B-A-N

SUPER CUT

Rooms and views extension with a view on Supercut - - - -

After becoming the first PVCu window fabricator to take delivery of a Supercut 5 machining and cutting centre in 2014, Rooms and Views in Buckley has taken an unprecedented step in the expansion of its premises... by designing and building an extension specifically to house a brand new Supercut 6!

Kevin McClure, Managing Director explains:

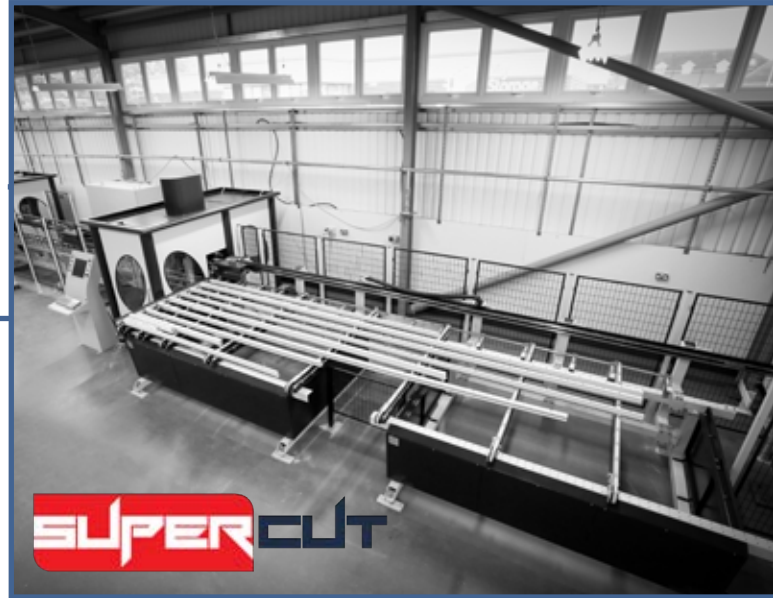
"We've been delighted with the Supercut 5 – it has significantly improved productivity and efficiency through the factory since we installed it last year.

"Our ideal choice of machine would have been the Supercut 6, but we didn't have the space needed for the larger machine.

"So we decided to increase the size of the factory, which gave us the opportunity to design and build an extension around the machine we originally wanted.

"The experts at Avantek were on hand to give timely and detailed advice during the exhaustive design process.

"The extension took six months to build, with the new machine delivered and installed in September 2015 once the building was ready. The Supercut 5 was still in use while the 6 was being commissioned, meaning minimal disruption to our operations."



In addition to the Supercut 6, Rooms and Views purchased new Wegoma 5-head and 4 head welders, Urban SV 530 and SV 405 corner cleaning machines.

The new machinery has enabled the two-shift operation to double its capacity of cutting, preparation and welding – creating five new jobs in the process to manage new logistic premises and alterations to quality control procedures. Sales order personnel have also been recruited to this growing company.

Kevin concludes:

"The extension and new machinery were essential to achieve the desired growth to date, with the Avantek team providing immediate service and tremendous support. It's a really exciting time at Rooms and Views and further development is firmly in our sights so watch this space!"

Reputation and relationships count for Universal

When a family-owned company needed to tackle a shortfall in capacity by investing in new machinery, they turned to a company with an ever-increasing reputation for excellence – both as a company and the individuals behind it.

Shrewsbury-based Universal Trade Frames prides itself in providing the highest quality manufactured PVCu products available to the trade. Formed in 1995, the firm is renowned for striving ahead of the moving trends within the industry.

With 45 employees and an annual turnover of £5.5m, Universal recognised that new machinery would be necessary to increase output and reduce lead times for its customers and began negotiations with two established companies.

It wasn't long before one of those firms, Avantek Machinery, secured the sale of an Urban SV 800, which they had fully refurbished, before installing it along with one of their own new quad welders.

Universal general manager, Duncan Saunders, explained the decision: "Avantek has a great reputation within the industry. We knew about the quality of the machines the team provide and the service that goes alongside and that's what we were looking for."



A projected installation time of three weeks was given and the work began – and three weeks later everything was fully fitted and operational with the minimum of fuss.

So, has the new machinery solved the capacity shortfall problem? Duncan has no doubt about it.

"The two additions have made a massive difference to output and we are now operating far more effectively and efficiently.

The production team is very happy with the two machines and we're very pleased with the influence that they've had on our workflow.

"Avantek has delivered exactly what it promised. An excellent company to work with, it has the right people offering the right products - which instils the right confidence. It's no surprise that it's earned such an outstanding reputation in the industry."

Truframe and Supercut - “a match made in heaven”

Purchasing new machinery is a huge investment for any firm to commit to, not only the initial financial outlay but the potential to lose money during a difficult transitional period as a new system is installed and initiated – but those problems can be avoided with a special kind of business relationship.

From humble beginnings 21 years ago, TruFrame is now one of the largest manufacturers of uPVC windows and doors in the UK, producing thousands of frames each week.

A big part of that continued programme of growth has been the ability to keep up with the latest tooling and equipment as TruFrame’s marketing director, Patrick Firmager, explains:

“We identified that expected growth would necessitate expansion for us. Knowing the long lead times for new machinery to arrive, we knew we’d have to act fast to put things in place in plenty of time to minimise disruption.

“Dealing with foreign companies tends to be very slow with long response times and a lack of availability or personnel to sort out problems.”

It was with this in mind that TruFrame decided to work with UK firm Avantek and ordered the very first, newly-



designed Supercut 6 – and just three months after the initial order the state-of-the-art machine was delivered and commissioned.

“I just can’t fault it,” says Patrick. “Obviously, with it being a new product on the market we had our doubts, but they were quickly put to bed. Now we couldn’t be happier with the Supercut 6!

“Our whole team have really appreciated dealing with a UK-based company and that’s helped to make the transition much smoother.

They’ve been quick to react to any queries we’ve had and they haven’t shirked away from the challenges – just been really helpful.

“Avantek have welcomed all of our feedback and we can honestly say it’s been a match made in heaven.”

WB Group “tools up” with Wegoma machinery

When WB Group, one of the North’s leading manufacturers of PVCu windows and doors, GRP composite doors and PVCu door infill panels, decided to invest almost £500k in new machinery as part of its philosophy of continued investment and improvement, Wegoma was an obvious choice.

WB Group, which employs over 90 staff and operates from a 60,000 ft² production plant in County Durham, has grown substantially, and with volumes continuing to increase, depends on reliable and efficient machinery in order to manufacture the highest quality products through the most efficient processes.

Tony Craggs, Managing Director, explains:

“We’ve been using Wegoma for around 20 years and know and trust the Avantek team – so when we decided to invest in our latest set of new machinery, they were the obvious people to speak to, as well as looking at alternative suppliers as a benchmark.

“After several conversations and lots of research, we visited their stand at the FIT Show in 2014 and did the deal there and then. In all, we’ve invested almost half a million pounds on two Wegoma WSALVE quad welders, two Wegoma WSA4UNI 4-head inline welders, a Wegoma DS130ac computerised double-mitre saw, an Urban SV530 CNC corner transom cleaner,



and an Urban AKD 6605/8 8-head welder.

“We decided to install the machinery in a phased approach and it’s all gone very smoothly – any problems were dealt with immediately and we’re now just finishing off the implementation of the 8-head welder.

“We’re already seeing efficiency improvements from the new kit, with products moving through the factory more quickly resulting in better lead times for our customers. Product quality has also improved with the new investment.

“The Avantek team has been responsive and really helpful throughout the process, and even trained our staff to use the new machinery. Everyone on site has got to grips with it all really quickly and I wouldn’t hesitate to recommend Avantek if you need any advice about PVCu window machinery.”



Avantek Machinery Ltd
Flamstead House,
Denby Hall Business Park
Denby, Derbyshire, DE5 8JX

Tel: +44 (0)1332 883 910
Fax: +44 (0)1332 883 911
Email: sales@avantekmachinery.co.uk

www.avantekmachinery.co.uk