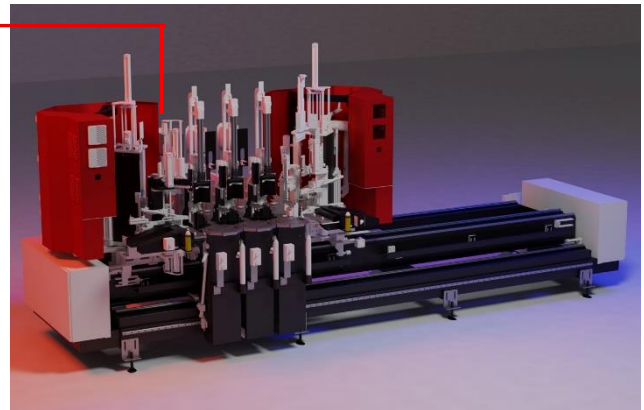
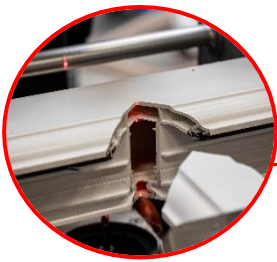


SL5-TFF

Welding Machine at 5 Heads CNC

Very high precision system, more than a welding machine, the SLFF-5TV is a real **production center**, a complete machine which allows to **weld simultaneously the 2 external corners** of the switchboard that **1, 2 or 3 transoms inside**. It is a **5 Heads in line** designed specifically for those markets that require fixtures with crosspieces welded in "V" mode: **The corners of the profile are welded at 90°** while, thanks to the 3 modern central heads, **the crosspieces are joined with the Notch Transom Welding**.

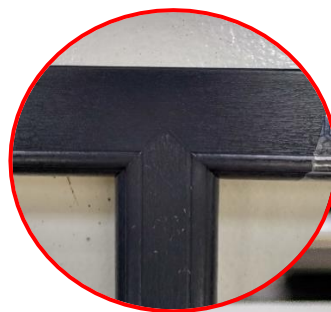
Introduction



V-Perfect: The Perfect Weld

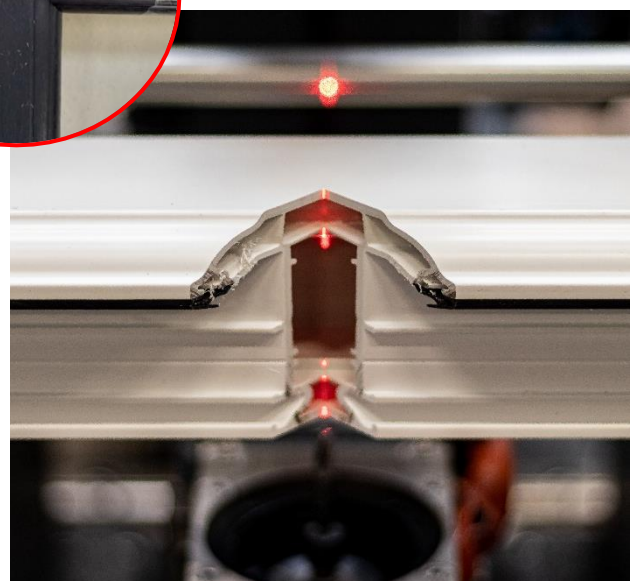
At the base of the project there is the **V-Perfect technology**, a patent that allows you to work painted or coated Pvc profiles with films but also to combine them with **acrylic coatings** or real materials such as **laminates in wood or aluminum** and **without having to touch up with the marker anymore**: thanks to the **SLFF-5TV** in a single cycle it is possible to obtain a frame with finished, precise, clean crosspieces and with aesthetically excellent welding.

5 Reason to choose SL5-TFF



Every Material / Every Coating

- ✓ **Innovative technology:**
It's possible to **weld both the 2 external corners of the frame and 1, 2 or 3 crosspieces** inside at the same time.
- ✓ Allow to weld profiles coated **with any type of film or foil**.
- ✓ **Reduction of time and costs:**
After welding, it must not be cleaned or touched up, therefore there is no need for the cleaner or the table to turn parts.
- ✓ **Reduction of labor:**
Not having to finish the corners, only 1 operator is required to load the profiles.
- ✓ **Solves the problem of profile tolerances:**
A special automatic calibration system allows to compensate it.



All the necessary operations are therefore performed automatically, milling with the High Speed system, positioning at the welding positions, cyclical casting, compression and cooling and, at the end of the process, releases the welded profiles.

The SL5-TFF welding machine is also equipped with a **positioning system of the upper counter-shape with magnetic locking** as well as the possibility of automatically adjusting the burn ($5 \div 6$ mm), to compensate for the errors of the cutting angles - horizontal and vertical - within 2 mm of tolerance and automatically correct errors in profile height up to 0.5 mm.

Specifications

Dimensions

Length	2.600 mm
Width	5.800 mm
Height	2.500 mm
Weight	5.000 Kg

Details

Power	25 kW
Power supply	400 V
Air Consumption per cycle	200 NI/min
Operating Pressure	7 bar

Operating Features

Composition

Structure

5 Heads in Line.

Operators

1

Machining

Contemporary welding of 2 corners and 1, 2 or 3 transoms.
Gasket worked directly during the welding cycle.

Technical Features

Performance

Up to 1 Cycle/180 seconds*

* Depending on the types of profiles, weld bead and loading speed.

Dimensions Weldable Profile

Height	58 ÷ 130 mm
Width	40 ÷ 130 mm

Dimensions Weldable Side (among heads)

Maximum:	5.000 mm
Minimum:	370 mm

Optional

Upon request the machine can be equipped with:

Production data monitoring:

Control of all the data of the welded elements deriving from the optimization and manual production over time (change time of the countershims, monitoring of the working time, monitoring of the time for unloading from the cooling table).

Welding option maximum height 180 mm.

Exhauster for SL5-TFF welding machine without curb.

Software for converting imported data files.

Electronic control system of countershims.